



# Home Charging

The complete home charging solution, designed to help maximize vehicle uptime and drive productivity for you and your business.



## Ford Pro Charging Software

### Take Work Vehicles Home

Allows drivers to continue taking their work vehicles home, reducing everyday driving time and cost.

### Simplified Charging

Simplifies home charger installation and tracking across your take-home fleet.

### Reimbursement Reports

Receive accurate energy cost estimates utilizing 'time of use' charging data directly from the charger and dynamic utility rates by the hour.

### Works with any EV

Whether Ford or another make, our Home Charging Software connects across EV brands within your fleet.

### Smart Scheduling

Avoid costly energy rates by scheduling charging sessions during off-peak hours when employees are plugged in at home.

### Always Connected

Cellular connection right-out-the-box\* enables remote support, real-time fault notifications and allows Fleet managers to track employee usage without a Wi-Fi connection or trip to the employee's home.

\*Connectivity dependent on cellular coverage in the area.

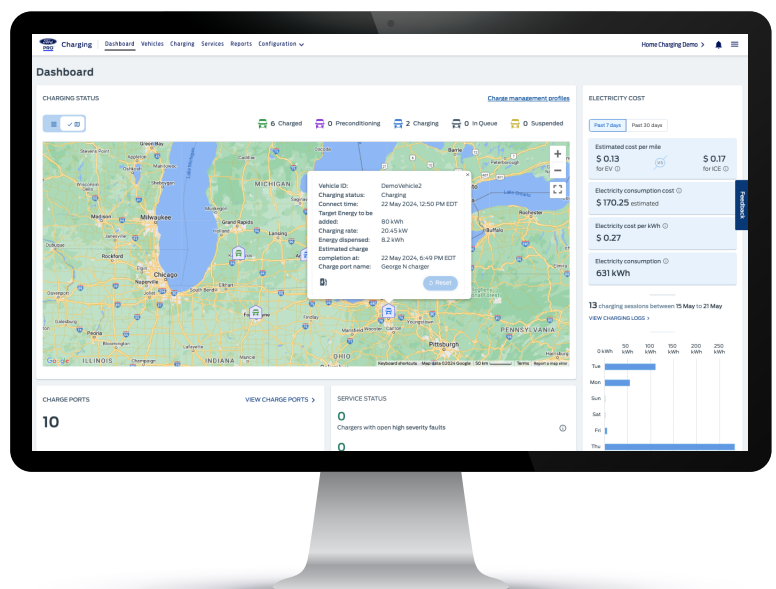
### Get in Touch



Book a Consultation



1-800-34-FLEET





## Smart Chargers

### Ford Pro™ Series 2 AC Charging Station 48A

- 240V Connector
  - Max Output Current 48A (requires 60A circuit)
  - 0-100% charge in 8 hours (E-Transit)<sup>2</sup>
  - 15-100% charge in 10 hours (F-150® Lightning™ Pro Standard-Range Battery)<sup>2</sup>
  - Works with all EVs that use US standard charging connectors or adaptors (J1772)
  - Includes 25 ft. cord
- 
- Commercial Grade Enclosure
  - Primary Use Case: Overnight charge
  - Cellular pre-configured
  - Backed by 3-Year Warranty<sup>3</sup>
  - Installation by licensed electrician required
  - Financing options available through Ford Pro™ FinSimple™



## Expert Installation

### Ford Pro™ + Qmerit : Our Trusted Provider for Home Installation Services

Qmerit is a Ford Pro home installation provider. Full-service concierge installation services (for up to 80A/240V charging solutions) are available for fleet home customers. Concierge service provides:

- Dedicated project management
- Streamlined driver intake form
- Certified Installer Network



<sup>1</sup> Eligible vehicles receive a complimentary three-year trial of E-Telematics services that begins on the new vehicle warranty start date. Requires modem activation. Terms and conditions apply. Telematics service and features, and access to vehicle data depend on compatible AT&T network availability. Evolving technology/cellular networks availability. Evolving technology/cellular networks/vehicle capability may limit functionality and prevent operation of connected features. After the three-year trial, annual service contract is required for E-Telematics service. Go to [fleetaccount.ford.com](https://fleetaccount.ford.com) or 1-833-811-3673 to activate E-Telematics service.

<sup>2</sup> Charge time based on manufacturer computer engineering simulations. The charging rate decreases as battery reaches full capacity. Your results may vary based on peak charging times and battery state of charge.

<sup>3</sup> The Limited Warranty is being provided by Ford to the person or entity who purchased the Product from Ford ("Buyer") and, subject to the product terms and conditions, covers any defect in the Product which can be directly and exclusively attributed to design, workmanship or material defect of the Product for a period of three (3) years (the "Warranty Period") after the Warranty Starting Date (as hereafter defined). The "Warranty Starting Date" is the date that is the earlier of: (i) the date the Product is installed at the Buyer's site; or (ii) the date that is six (6) months after the date the Product is shipped to Buyer.