



# Installing the Ford Pro™ Telematics Solar Asset Tracker\*

This guide covers the solar asset tracking device.

\*Ford Pro Telematics with Asset Tracking service and features depend on subscription and compatible 4G/5G network availability. Evolving technology/cellular networks capability may limit functionality and prevent operation of connected features.

5951R11 | 11.03.2025 © 2025 Ford Motor Company





## Table of Contents

What's in the Box? .....	3
Additional Tools and Materials .....	3
Installation Instructions .....	4
Installation Examples .....	6
Important Final Reminders .....	6



# What's in the Box?

Before you start installing your device, make sure you've got everything you need from the list below:

- Solar Device
- Self-Tapping Sheet Metal Screws
- Rechargeable 3.8V Lithium-Ion Battery Included and Already Installed



## Additional Tools and Materials

The tools and materials listed below are necessary for the installation process. However, the specific brands and product types shown in the images are just examples. Feel free to choose any equivalent brands or products that meet the required specifications. Note that some items are optional and should be used only if required for your installation.

- Option to order accessories from **Ford Shopify** will be available soon

### For Mounting with Screws, VHB Tape or Magnets



**Phillips Pan Head Drill**



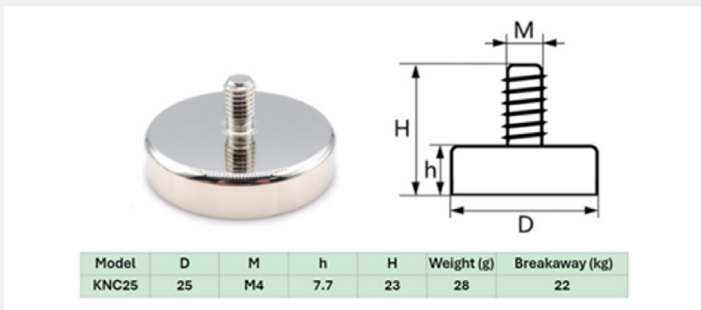
**Clean, Absorbent Rags**



**Cleaner/Degreaser**  
(Optional)



**3M 5962 Double-Sided Very High Bond Tape**  
(Optional)



**Screw-On KNC25 Magnets** (Optional)

If you choose to use a different model, be sure to note the diameter, thread size (M), height (H) and breakaway force specifications.

### Mounting Options

- Screws are best for permanent installations and installations in high-vibration environments
- VHB tape is best for interior installations or protected exterior areas where drilling isn't possible. Checks may be required to ensure the adhesive remains secure
- Magnets are best for repositionable mounting on iron-based metallic surfaces. Suitable for low to moderate vibration environments. Regular checks are recommended to confirm the magnets remain in place

# Installation Instructions

## Determine the Best Location to Install the Asset Trackers

### 1. Clear View of the Sky

Place the tracker so that the top surface has an unobstructed view of the sky. The top of the device should have access to an open space to maintain a clear signal and have maximum sunlight exposure to maintain battery life. The device's top side is equipped with a light sensor to detect light levels.

Install the device in a location with direct sunlight exposure for most of the day, such as the upper edge, roof or top frame of the asset.

If installing on containers or trailers, avoid placing the device where shadows from walls, equipment or other containers might block sunlight.

### 2. Device Mounting Position

The preferred option is to have the device installed horizontally and in recommended areas such as the upper exterior side or edge of the asset. If possible, refrain from installing on rooftops as debris, dust, water and snow can accumulate. If no other viable location is available, you may install on the roof edge. Regularly check and clean the device as needed.

Vertical mounting is also acceptable as long as the top surface has an unobstructed view of the sky.

### 3. Do Not Mount Antenna or GPS Against Metal

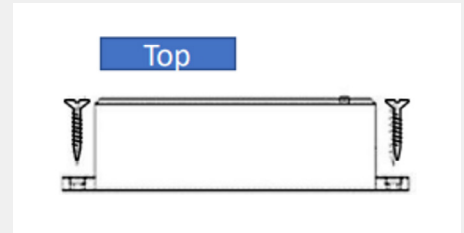
Avoid mounting the device's top and sides against any metal surfaces. If you must mount it near metal, ensure the antenna is not against any metallic object.

### 4. Protection from Damage

Choose a spot where the tracker is less likely to be damaged or knocked off during regular use of the asset. Take note of assets that may pass through environments that could damage the device, e.g., low bridges, snow clearing machines, etc.

### 5. Mounting Surrounding

Ensure the mounting location does not have any components behind it that could be damaged by the screws. Do not drive screws into coolant lines, radiators, electrical wiring, fluid tanks or moving components.



## Asset Tracker Quick-Start Guide

This guide is designed to walk you through setting up Asset Tracking in Ford Pro Telematics in simple steps, so you can get up and running quickly. You'll learn how to:

- Understand Asset Tracking
- Link Asset Trackers to Your Equipment
- Find and View Data

To download the Quick-Start Guide, click [here](#).

## Install the Device

### 1. Record the Asset Tracker IMEI Number

Locate the IMEI number on the Solar Asset Tracking device and record it for later in the setup process. This number will be used to complete the pairing of your asset to the Ford Pro Admin page.

### 2. Preparing the Mounting Location

Use an acetone-based cleaner to remove oil, grease and dirt from the mounting location. Wipe down area with an absorbent rag or towel. Ensure the area is dry before mounting the asset tracker.

### 3. Placing and Mounting the Tracker in the Desired Location

#### Screws:

Using a Phillips pan head drill, screw the provided stainless-steel self-tapping screws through the mounting holes of the tracker into the asset. Ensure that each screw is seated securely.

#### VHB Tape:

Suitable for locations that won't be exposed to extreme weather.

- Peel back the adhesive backing and firmly press the tracker into place on a clean, smooth and dry surface. Apply even pressure across the tracker to secure the tape bond fully

#### Magnets:

For assets with iron-based metallic surfaces.

- Use the existing screw holes on the tracker to secure mounting magnets. This way, you're essentially attaching the magnets to the tracker itself
- Once the magnets are secured to the tracker, simply position the tracker on the desired metallic surface

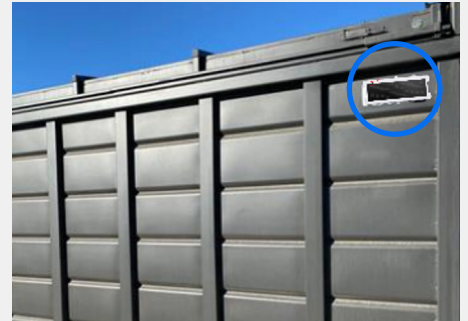
## Important

- You can use the provided screws to mount the tracker on steel that is up to 1/8-inch thick. For thicker steel, use machine screws
- Do not overtighten the self-tapping screws as they may crack the base. Ensure both sides are equally tight
- If you must enclose the tracker, use a nonmetallic housing and ensure that the tracker has good visibility to the sky through the enclosure

# Installation Examples

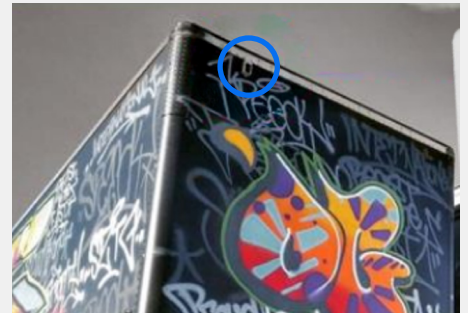
## Dumpsters, Roll-Off Containers and Storage Containers

Mount the tracker on the upper exterior side or edge of the container, keeping it as elevated as possible to maintain a clear line to the sky and to allow direct sunlight exposure for most of the day. Avoid placing it centrally on the container to minimize the amount of metal around the device. Ensure the GPS side of the device isn't directly against metal.



## Mobile and Stationary Equipment

Mount the tracker in an upper, non-visible spot on the exterior, or on the roof edge. These locations maintain GPS access and allow direct sunlight exposure for most of the day, while keeping the tracker out of easy reach, reducing the risk of tampering. Ensure the GPS side of the device isn't directly against metal.



## Important Final Reminders

- **Device Mounting:** Do not mount the solar device under any object. The solar panel needs to have an unobstructed view of the sky to allow the device to recharge. Clean the solar panel after the initial installation and as often as needed whenever you notice debris, dust or snow accumulating on it
- **Antenna Positioning:** Ensure the antenna side of the tracker is not placed against metal surfaces
- **Check Fasteners:** Make sure to retighten any screws that may have loosened during installation or use
- **Regular Monitoring:** Frequently check your trackers to ensure they are functioning properly