



Approximate tracker location shown.

# Installing the Ford Pro™ Telematics Wired Asset Tracker\*

This guide covers the wired asset tracking device.

\*Ford Pro Telematics with Asset Tracking service and features depend on subscription and compatible 4G/5G network availability. Evolving technology/cellular networks capability may limit functionality and prevent operation of connected features.

5951R09 | 11.10.2025 © 2025 Ford Motor Company





## Table of Contents

What's in the Box? .....	3
Additional Tools and Materials .....	3
Cable Connection Guide .....	5
Installation Instructions .....	6
Installation Examples .....	9
Important Final Reminders .....	11



# What's in the Box?

Before you start installing your device, make sure you've got everything you need from the list below:

- Wired Device
- Cable
- Self-Tapping Sheet Metal Screws
- Rechargeable 3.8V Lithium-Ion Battery Included and Already Installed



# Additional Tools and Materials

The tools and materials listed below are necessary for the installation process. However, the specific brands and product types shown in the images are just examples. Feel free to choose any equivalent brands or products that meet the required specifications. Note that some items are optional and should be used only if required for your installation.

- Option to order accessories from **Ford Shopify** will be available soon

## For Mounting with Screws



**Phillips Pan Head Drill**



**Clean, Absorbent Rags**



**Cleaner/Degreaser  
(Optional)**



**Heat Shrink Ring Terminal  
(Assorted)**



**Heat Gun  
(Optional)**



**Heat Shrink Butt  
Connector  
(Assorted)  
(Optional)**



**Multi-Meter**



**Wire Cutters and Crimper**

Continued on the next page

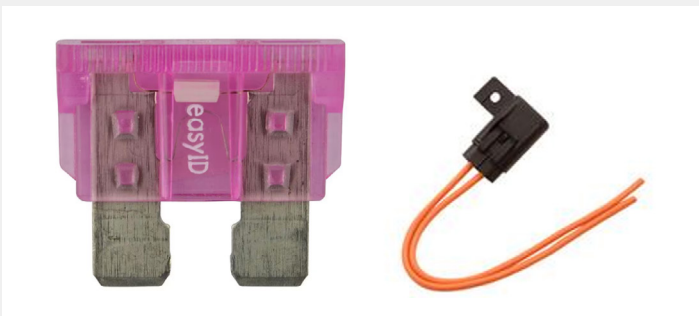
# Additional Tools and Materials



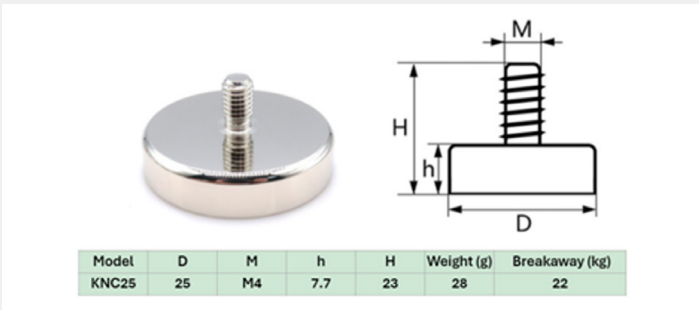
**18 Gauge Electrical Wire to Extend the Power and Ground Connections**  
(Optional)



**3M 5962 Double-Sided Very High Bond Tape**  
(Optional)



**(2 to 3) Fuse Holders (18 Gauge) and 3 Amp Rated Fuses.**  
**Check the Fuse Panel to Identify Which Fuse to Use**  
(ATC, Mini, Micro)



**Screw-On KNC25 Magnets** (Optional)

If you choose to use a different model, be sure to note the diameter, thread size (M), height (H) and breakaway force specifications.

## Mounting Options

- Screws are best for permanent installations and installations in high-vibration environments
- VHB tape is best for interior installations or protected exterior areas where drilling isn't possible. Checks may be required to ensure the adhesive remains secure
- Magnets are best for repositionable mounting on iron-based metallic surfaces. Suitable for low to moderate vibration environments. Regular checks are recommended to confirm the magnets remain in place

The wired installation involves power and circuits. If you're not experienced with 12V-40V wiring, **use a professional installer**. To arrange installation, please contact a third-party Installer to obtain pricing and schedule a date. Ford suggests the following Installers:

- Mobile Electronics Installers (MEI) – 855-889-4682, Ext 120
  - Locations supported: United States and Canada
  - Website: [www.meinstalls.com](http://www.meinstalls.com)
  - Install Request Form: <https://www.meinstalls.com>
  - Email address: [fordpro@meinstalls.com](mailto:fordpro@meinstalls.com)
- Orbital – 317-774-3668, Ext 102
  - Locations supported: United States
  - Website: <https://orbitalinstalls.com/>
  - Email address: [scheduling@orbitalcustoms.com](mailto:scheduling@orbitalcustoms.com)



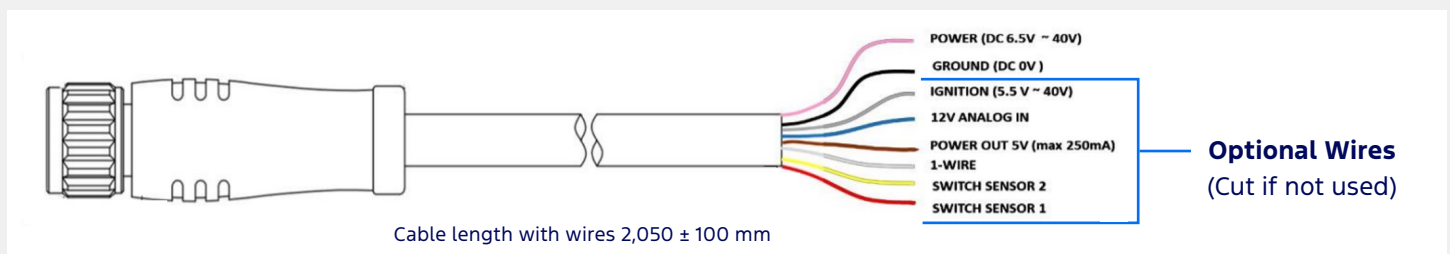
# Cable Connection Guide

The wired asset tracker includes a cable with eight (8) wires designed to support different use cases. While there are multiple wires, only two connections are mandatory: the power and ground connections. The other wires can be left unconnected if they are not needed and can be cut off. The two mandatory wires are:

- The **POWER** line is **PINK** and labeled **"POWER IN"**
- The **GROUND** line is **BLACK** and labeled **"GND"**

## Cable Connector Mapping

Type	Color	Purpose	Voltage Range	
			Min.	Max.
Input	Pink	Power	6.5 volts	40 volts
Common Ground	Black	Ground	-	-
Input	Gray	Ignition (Engine Hours)	5.5 volts	40 volts
Input	White	One Wire (Not in Use)	-	3.3 volts
Output	Brown	Power Out (Not in Use)	5 volts	12 volts
Input	Blue	12V Analog (Not in Use)	0 volts	12 volts
Input	Yellow	Digital Input 1 (Not in Use)	0 volts	3.3 volts
Input	Red	Digital Input 2 (Not in Use)	0 volts	3.3 volts



## Important

- Do not tie the ignition wire with the power wire unless that's the intended use case
- Please cut off any unused exposed conducting wires and/or use appropriate means of isolation between the unused wires
- Make sure the metal wirings are not exposed or touching each other (risk of shorting)
- If you must enclose the tracker, use a nonmetallic housing and ensure that the tracker has good visibility to the sky through the enclosure

# Installation Instructions

## Determine the Best Location to Install the Asset Tracker

### 1. Clear View of the Sky

Place the tracker so that the top surface has an unobstructed view of the sky. The top of the device should have access to an open space to maintain a clear signal.

### 2. Device Mounting Position

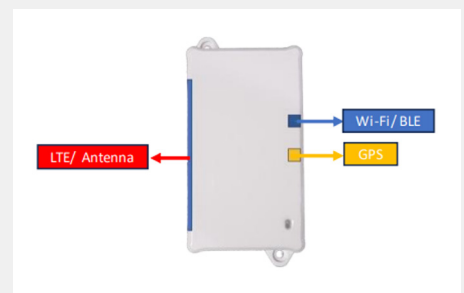
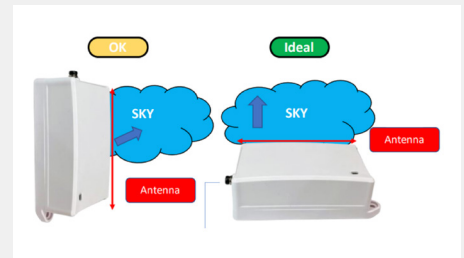
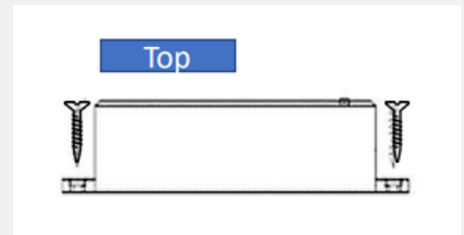
Avoid mounting the device's top and sides against any metal surfaces. The preferred option is to have the device installed horizontally and away from as many metallic surfaces as possible. If installing on rooftops, be aware that debris, dust, water and snow can accumulate. Regularly check and clean the device as needed.

### 3. Protection from Damage

Choose a spot where the tracker is less likely to be damaged or knocked off during regular use of the asset. If possible, refrain from installing on rooftops of trucks and trailers that may pass through environments that could damage the device, e.g., low bridges, snow clearing machines, etc.

### 4. Mounting Surrounding

Ensure the mounting location does not have any components behind it that could be damaged by the screws. Check that the designated location does not have any coolant lines, radiators, electrical wiring, fluid tanks or moving components that could be damaged by the screws.



## Asset Tracker Quick-Start Guide

This guide is designed to walk you through setting up Asset Tracking in Ford Pro Telematics in simple steps, so you can get up and running quickly. You'll learn how to:

- Understand Asset Tracking
- Link Asset Trackers to Your Equipment
- Find and View Data

To download the Quick-Start Guide, click [here](#).



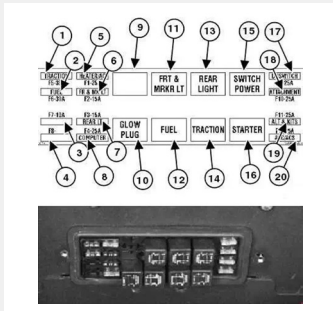
# Install the Device

## 1. Record the Asset Tracker IMEI Number

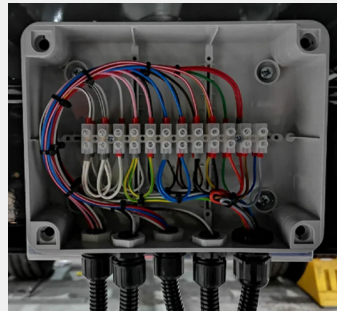
Locate the IMEI number on the Wired Asset Tracking device and record it for later in the setup process. This number will be used to complete the pairing of your asset to the Ford Pro Admin page.

## 2. Finding the Constant Power Source

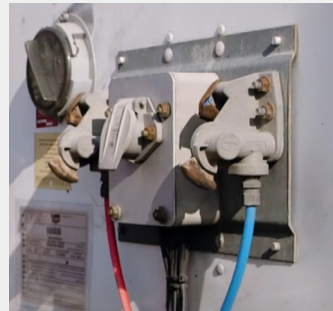
- Identify your constant power source
  - a. Refer to the equipment's manual to locate the constant power source and determine the function of each wire or fuse associated with that power source
  - b. If you plan to tap into the fuse panel of an asset, identify the type of fuse tap required and verify that the fuse panel has a free or accessible fuse slot that can provide a stable power source for the tracker. Refer to the fuse map to identify the function of each fuse



E.g., Bobcat Fuse Panel



E.g., Trailer Junction Box



E.g., Power Box for Box Trailer/Refer Unit



E.g., 7-Pin Diagnostic Power

- Using a voltage multi-meter, measure voltage on all terminals to identify power and ground
- Find a continuous power source that provides 6.5V-40V DC. Ensure the voltage is present on the power source even when the asset is off or not in use for extended periods

## 2. Finding the Ignition (For Engine Hours)

**Note:** The IGNITION line is GRAY and labeled "IGNITION." Do not tie the ignition wire to the power wire unless that's the intended use case.

- Using a DC voltage multi-meter, identify a terminal that provides 5.5V-40V DC when the ignition is on
- Ensure that the identified ignition source provides the specified voltage only when the ignition is on and drops to 0V when the ignition is off

## 3. Cable Preparation and Routing

- Install fuse holders with 3-amp fuses on the constant power lead
- Attach the ring terminal connector to the constant power (pink) and ground (black) leads. If ring terminals cannot be used, cut and splice the wires, use heat shrink butt connectors
- Use heat shrink tubing on all connections (ring terminals and heat shrink butt connectors) after crimping

## 4. Connect the Cables

- Connect the black wire (with ring terminal) to the asset's ground connection
- Connect the pink wire (with ring terminal) to the asset's constant power connection
- Connect the GRAY ignition wire labeled "IGNITION" to the identified ignition source

## Install the Device

### 5. Secure the Cables

- Ensure all wires are connected correctly. Check that all connections are watertight
- Verify that cables are not pinched. Ensure cables are not exposed to sharp edges
- Confirm cables are not near a heat source or moving parts
- Make sure cables are not swinging or dangling. Confirm that there aren't any long, unsecured runs

### 6. Preparing the Mounting Location

Use an acetone-based cleaner to remove oil, grease and dirt from the mounting location. Wipe down area with an absorbent rag or towel. Ensure the area is dry before mounting the device.

### 7. Placing and Mounting the Tracker

Place the tracker in the desired location on the asset.

#### Screws:

Using a Phillips pan head drill, screw the provided stainless-steel self-tapping screws through the mounting holes of the tracker into the asset. Ensure that each screw is seated securely.

#### VHB Tape:

Suitable for locations that won't be exposed to extreme weather.

- Peel back the adhesive backing and firmly press the tracker into place on a clean, smooth and dry surface. Apply even pressure across the tracker to secure the tape bond fully

#### Magnets:

For assets with iron-based metallic surfaces.

- Use the existing screw holes on the tracker to secure mounting magnets. This way, you're essentially attaching the magnets to the tracker itself
- Once the magnets are secured to the tracker, simply position the tracker on the desired metallic surface

## Important

- You can use the provided screws to mount the tracker on steel that is up to 1/8-inch thick. For thicker steel, use machine screws
- Do not overtighten the self-tapping screws as they may crack the base. Ensure both sides are equally tight



# Installation Examples

## Heavy-Duty Equipment

Most heavy-duty equipment, such as excavators, skid-steers and track loaders, use the fuse panel as a reference for constant power. The fuse panel may be in one of two places:

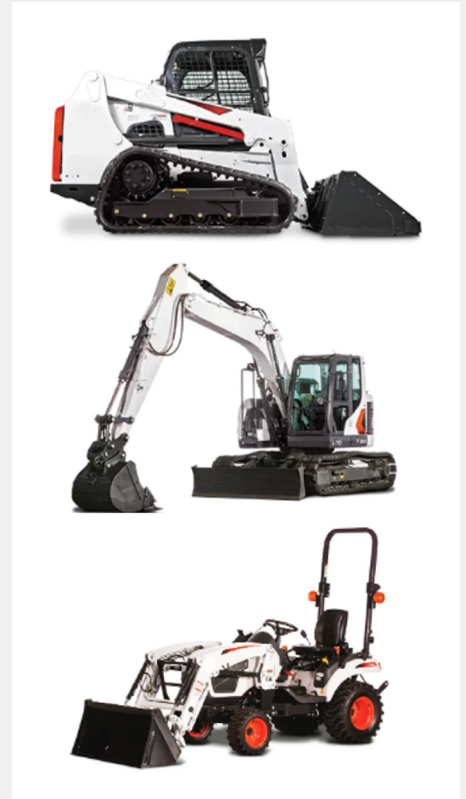
- On the exterior of the asset, outside the main cabin, often under a locked cover or panel
- Inside the asset, either underneath the dashboard or the seat

If the fuse panel's location is unclear, consult the equipment manual or seek assistance from a Technician. For example, in this excavator, the fuse panel is located on the exterior, as indicated by the blue circle in the image.

You can install the asset tracker inside the asset in one of the locations indicated by the blue circles in the image.

- **Upper interior:** Above the operator's seat, near the ceiling
- **Lower interior:** To the left or right of the operator's seat, near the floor panels
- **On the exterior:** Near the fuse panel, make sure the mounting area is shielded from mud and potential impacts

Screws are the most secure method, especially for high-vibration environments typical of heavy equipment. If drilling is not an option, VHB tape can provide a strong bond on clean, smooth surfaces for interior installations.



# Installation Examples

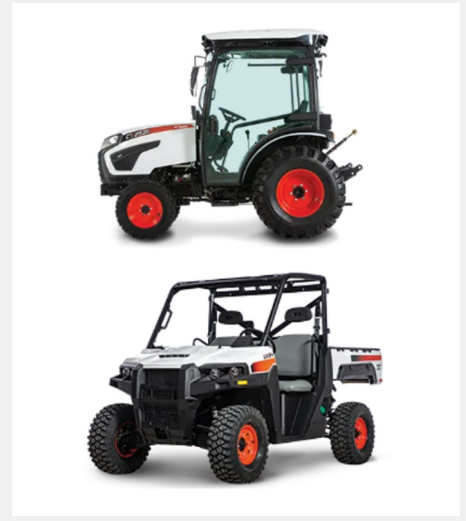
## Utility Vehicles

The fuse panel for most utility vehicles will be in the interior. Some common places are underneath the seat or next to the dash. If the fuse panel's location is unclear, consult the equipment manual or seek assistance from a Technician.

You can install the asset tracker inside the asset in one of the locations indicated by the blue circles in the image.

- **Upper interior installation:** Placing the tracker above the operator's seat, near the ceiling, ensures a better GPS signal
- **Lower interior installation:** Installing it to the side of the operator's seat, near the floor panels

VHB tape can provide a strong bond on clean, smooth surfaces for interior installations.



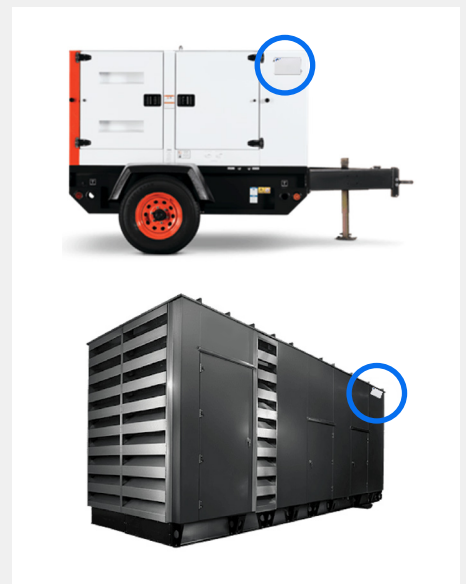
## Generator

Fuses are typically located either in the battery compartment, inside or near the control panel of the generator. If the fuse panel's location is unclear, consult the equipment manual or seek assistance from a Technician.

For larger generators, place the device on the upper side or back panel of the generator housing, away from exhaust and high-vibration areas.

- Self-tapping stainless-steel screws provide the most stable, long-lasting mount on high-vibration equipment like generators. Screw the device into a stable, accessible metal panel, such as the upper side or back of the generator housing. Be mindful of underlying wiring, fuel lines or coolant hoses when choosing the spot for drilling
- VHB tape can be used on clean, smooth and vibration-resistant surfaces

For lighter or smaller generators or situations where drilling is not an option, VHB tape can be used on clean, smooth and vibration-resistant surfaces.



## Important Final Reminders

- **Power Source:** Ensure that the device receives a constant power source, regardless of whether the asset is in the on or off state
- **Antenna Positioning:** Ensure the antenna side of the tracker is not placed against metal surfaces
- **Check Fasteners:** Make sure to retighten any screws that may have loosened during installation or use
- **Regular Monitoring:** Frequently check your trackers to ensure they are functioning properly